

# Flash Memory Series



## All Supply Chain

Strict selection of raw materials



## All Scenarios

Define specifications



## All Process

Quality assurance system

## All strict supply of raw materials



### Top chip

Use the leading technology of top 12nm (TF card) 22nm (SSD) master control chip



### Strictly selected particles

Strictly limit Samsung, Micron, Hynix, YANGTZE MEMORY original factory particles to ensure the stability of reading and writing



### Professional encapsulation

Select top packaging manufacturers, annual shipments reach ten million, yield rate is up to 99.9%

## All scenarios define the specifications



### Common application scenarios

e.g. Traffic data recorder, mobile phone



### High-speed read & write scenarios

e.g. Drone, game console



### Frequent read & write scenarios

e.g. IP camera

## All process quality assurance system

### Pre-sale

#### Quality control mechanism

Packaging strength test  
Sample sampling  
Velocity life detection  
APP fitness detection  
Compatibility Testing  
Drop test  
Shock impact test  
...

### On Sale

#### Global supply system

1 global logistics system  
6 overseas warehouses  
Automated order  
Excellent delivery service  
...

### After-Sale

#### Professional and win-win service concept

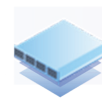
Global offline stores  
Replacement service  
7\* 24-hour hotline  
Buyout maintenance  
...

## Application of TF card in CCTV scenarios



### TF card + IPC

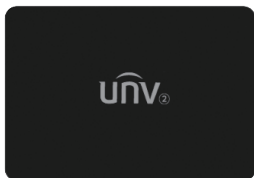
- Form the self-closed storage.
- Dual color TF card is optional, blue card is economical, red card is durable.
- 11 days HD video storage.
- With UNV TF card, life increased by 30%.



### Cooperate with NVR/ UNV cloud

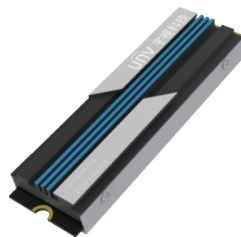
- Realize the Offline-Storage function.
- Automatically switch storage mode, disconnection continuous storage.
- Automatically rerecorded the local video to the NVR/ cloud after networking.
- (Optional) local/cloud dual storage and dual video insurance.

## Application of SSD scenarios



### SATA SSD + Old PC




- Only replace the hard disk to recover a new PC.
- Refused to stick, the overall speed up to 500%.
- 1T, 2T optional, traditional computer hard disk expansion.

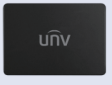




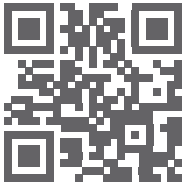
### NVME SSD + High Speed PC

- E-sports magnitude response, smooth game experience.
- 2 TB vast space, make exclusive game library.
- Shockproof design, huge amounts of read and write life.

## Product parameters

Picture	Product series	Capacity	Chips	Key specifications
	<b>Cost-effective Blue card</b> Used for vehicle traveling data recorder, mobile phone. High cost performance.	<b>32GB-256GB</b>	<b>TLC</b>	<b>Class10 A1</b>
	<b>High Speed Purple card</b> Used for game console, drones. Reading and writing rate reach more than 4000 IOPS.	<b>32GB-256GB</b>	<b>TLC</b>	<b>Class10 A2</b>
	<b>High Endurance Red card</b> Used for IoT, security monitoring. Working temperature range: 25-85 °C.	<b>32GB-256GB</b>	<b>TLC/MLC</b>	<b>P/E 3000</b>

Picture	Product series	Capacity	Protocols	Speed
	<b>U300 SATA series</b> Commonly used ports.	<b>128GB-512GB</b>	<b>SATA3.0</b>	<b>500MB/S</b>
	<b>U3000 series</b> Low temperature and low power consumption.	<b>256GB-2TB</b>	<b>PCIe 3.0x4 NVMe 1.3</b>	<b>3200MB/S</b>
	<b>U3000 Pro series</b> High speed, high performance.	<b>1TB-2TB</b>	<b>PCIe 4.0x4 NVMe 1.4</b>	<b>7200MB/S</b>



**www.uniview.com**

**Sales:** [overseasbusiness@uniview.com](mailto:overseasbusiness@uniview.com)

**Technical Support:** [globalsupport@uniview.com](mailto:globalsupport@uniview.com)

2022.10 OM - 200901 - SD V2.0

Disclaimer: All rights reserved, including final interpretation and content amendm